

THE ALL-NEW

NX

 LEXUS



NX

Introducing the all-new Lexus NX. Dramatic lines. Dramatic reactions. The NX was boldly constructed to up the ante on compact luxury SUVs. A growling spindle grille and striking 3-lamp LED headlights. Elegant illuminated door handles and dual exhaust. Your choice of a remarkable third-generation hybrid powertrain or a feverish twin scroll turbo—a first for Lexus. Not to mention *F SPORT*—an exclusively designed, detailed and performance-enhanced NX that can inject track-spirit into a jaunt to the corner bistro. Coming Winter 2014.



MAXIMIZES TORQUE. AND WEEKENDS.

Designed for urban life, the NX also knows how to take advantage of the open road. The first-ever turbo charger bearing the Lexus stamp combines unexpected fuel efficiency with unflinching performance. It's a world-first combination of water-cooled cylinder head, integrated exhaust manifold and twin scroll turbo charger. Quick and responsive, the 2.0 litre 4-cylinder direct injection twin scroll turbo minimizes turbo lag with excellent torque delivery over a wide band¹. Paired with a new 6-speed automatic transmission that calculates optimal torque then maximizes it, it's ready to turbo charge your spare time.

THE
LATEST IN
FIREWORKS
DISPLAYS.

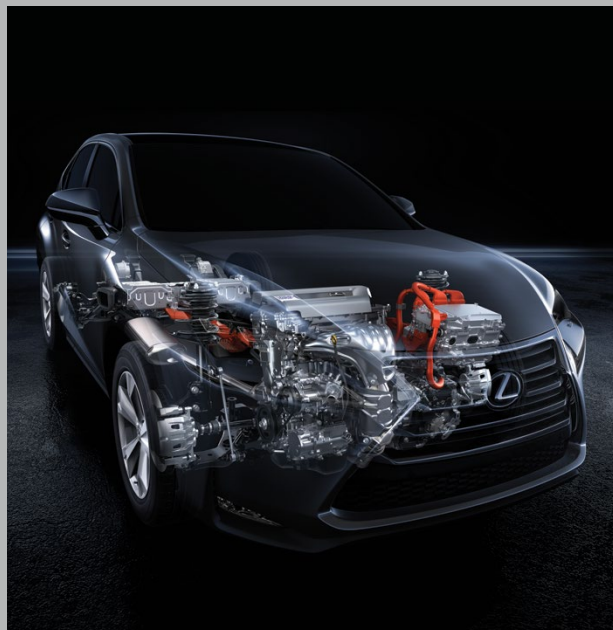


A bold take on the Lexus spindle grille. Sport-tuned front and rear suspension. A luxurious dark red interior and substantially bolstered sport-seats. What else would you expect of a rolling tribute to Fuji International Speedway?

Climb in the NX *F SPORT* and select the Sport S+ drive mode. Instantly the steering sharpens, acceleration quickens, and Adaptive Variable Suspension kicks in with precise damping for a stiffer, performance-focused ride.





**LEXUS
HYBRID
DRIVE**

FOR CITY DRIVERS,
NOT SUNDAY DRIVERS.

The NX 300h wrings high fuel efficiency and low emissions from a remarkable third-generation hybrid powertrain². Tuned for SUV performance, the 2.5 L 4-cylinder Atkinson engine features highly efficient intake and exhaust systems for greater power output¹. It's paired with an electronically-controlled Continuously Variable Transmission for exceptional fuel efficiency. And in SPORT mode the Hybrid System Indicator even changes to a tachometer. So you can watch the needle jump in time to your pulse.





Bold Exterior The diamond-shaped body features robustly-carved sculptural fenders.



Cabin Technology Available full-colour Head Up Display is advanced yet intuitive.



Design Details Signature L-shaped Daytime Running Lights are imposing yet sophisticated.



Active Safety Available Lane Departure Alert and Rear Cross Traffic Alert are the latest in safety^{3,4}.

NX 200t

KEY SPECS

2.0L Twin Scroll Turbo L4 Engine
Atkinson cycle¹
6-Speed Automatic Transmission
4-Cylinder Direct Injection Engine
235hp, 250 lb-ft torque¹
AWD (Dynamic Torque System)
Standard

STANDARD FEATURES

NuLuxe seat surfaces
8-Speaker Audio System
8-way power-adjustable front
seats
Smart Key System with Push
Button Start⁵
Drive Mode Select
Backup Camera with
guidance lines in 7-inch
multimedia display⁶
One-piece door handle with
hidden key barrel and
integrated lighting
17-inch alloy wheels
Lexus Spindle Grille
LED Headlamps
Dual exhaust with chrome tips

PREMIUM PACKAGE

(INCLUDES STANDARD
FEATURES PLUS)
Power and Heated steering
wheel
Driver Seat Memory
18-inch split 5 spoke alloy
wheels
LED High beam headlamps
Auto-dimming sideview
mirrors with auto reverse
tilt-down
Power Liftgate
Power Moonroof
Roof Rails
120V (100W) power outlet
Garage Door Opener

LUXURY PACKAGE

(INCLUDES PREMIUM
FEATURES PLUS)
Navigation system with
Remote Touchpad Interface⁷
10-Speaker Audio System
Leather Seat Surfaces
Interior wood trim
Blind Spot Monitor with Rear
Cross-Traffic Alert^{8,4}
Intuitive Parking Assist
Rain-sensing wipers

EXECUTIVE PLUS PACKAGE

(INCLUDES LUXURY
FEATURES PLUS)
Power-folding rear seats
Wireless Phone Charger
Head Up Display
Auto high beam feature
Lane Departure Alert³
Radar cruise control⁹
Pre-Collision System¹⁰

NX 200t



SERIES 1

Navigation system with remote touch interface⁷

Nuluxe *F SPORT* seating with contrast stitching

F SPORT leather-wrapped steering wheel & paddle shifters

F SPORT leather-wrapped shiftknob

LFA inspired instrumentation

G-force meter

Silver performance interior trim

Black Headliner

Aluminum pedals

F SPORT suspension and steering tuning

F SPORT 18-inch wheels

Unique *F SPORT* grille

Rain-sensing wipers

SERIES 2

Dynamic Radar Cruise Control⁹

Wireless Phone Charger

Head Up Display

Adaptive Variable Suspension

Lane Departure Alert³

NX 300h



KEY FEATURES

2.5L Hybrid Powertrain Atkinson Cycle¹

Unique 5-spoke alloy wheel

Optitron meters

Hybrid System Indicator

EV Drive Mode Select

Electronically Controlled Braking System

Pre-Collision System¹⁰

Dynamic Radar Cruise Control⁹

Wireless Phone Charger

Power-folding rear seats

Lane Departure Alert³

Head Up Display

Auto high beam feature

Metallic Rear Bumper Fins

EXTERIOR COLOURS



EMINENT WHITE
0085



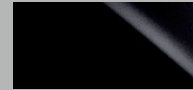
NEBULA GREY
PEARL 01H9



ATOMIC SILVER
01J7



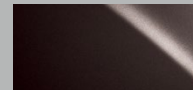
STARLIGHT BLACK
MICA 02I7



OBSIDIAN
02I2



MATADOR RED
MICA 03R1



FIRE AGATE PEARL
04V3



ULTRASONIC BLUE
MICA 08U1

Colours and options are subject to change. Colour swatches are representations of the proposed colour and do not represent the final product. For latest information, please see your local Lexus dealer.



THE ALL-NEW LEXUS NX. COMING WINTER 2014.

Vehicles in this brochure shown with optional equipment. Some features mentioned and/or shown in this brochure may only be available as part of an optional package. Under very cold conditions, the operation of some vehicle electronic systems using liquid crystal technology (such as CD, DVD, NAV and Audio displays) may be adversely affected until a warmer interior vehicle temperature is reached. Lexus reminds you to place small children in CSA-approved car seats – in the rear seats, to always wear your seatbelts, and to drive safely. **1.** Ratings achieved using the required premium unleaded gasoline with an octane rating of 91 or higher. **2.** The Lexus Hybrids have nearly 70% fewer smog-forming emissions compared against similarly equipped conventional gasoline power vehicles. Based on North American sales data and Federal Tier 2 engine emission requirements. **3.** Lane Departure Alert is designed to read the lane markers of certain roads. If the vehicle approaches the outer limits of its lane, the system warns the driver that corrective action may be required. It is not a collision-avoidance system and is not a substitute for safe and attentive driving. System effectiveness depends on many factors. Please see your Owner's Manual for further information. **4.** Do not rely exclusively on the Rear Cross-Traffic Alert System. There are limitations to the function, detection and range of the system. You should also look around outside your vehicle, over your shoulder and use your mirrors to confirm rearward clearance. For a complete list of limitations and directions, please see your Owner's Manual. **5.** The SmartAccess system may interfere with some pacemakers or cardiac defibrillators. If you have one of these medical devices, please talk to your doctor to see if you should deactivate this system. **6.** The backup camera does not provide a comprehensive view of the rear area of the vehicle. You should also look around outside your vehicle and use your mirrors to confirm rearward clearance. **7.** The Navigation System is designed to assist in locating an address or point of interest. Discrepancies may be encountered between the system and your actual location. Road system changes may affect the accuracy of the information provided. Rely on your common sense to decide whether to follow a specified route. Detailed coverage not available for every city or roadway. Periodic updates available at an additional cost. See your Navigation System Owner's Manual for further details. Navigational systems in some vehicles are available with bilingual capability. **8.** Do not rely exclusively on the Blind Spot Monitor System to determine if a lane change is safe. Always look over your shoulder and use your turn signal before changing lanes. There are severe limits to the function, detection range and clarity of the monitor system. For a complete list of limitations and directions regarding use of the monitor system, please see your Owner's Manual. **9.** Radar Cruise Control was designed to assist the driver and is not a substitute for safe and attentive driving practices. Please see your Owner's Manual for important cautions and instructions. **10.** The Pre-Collision System is designed to help reduce the crash speed and damage in certain frontal collisions only. It is not a collision avoidance system and is not a substitute for safe and attentive driving. System effectiveness depends on many factors, such as speed, driver input and road conditions. Please see your Owner's Manual for further information.

Preliminary specifications subject to change. US prototype model shown.